

KENZ
COMPOUND



FIRST
GROUP

Location and Distances:

Kenz development is located in October Gardens, 10 minutes from Al Remaya Sq. The location provides easy access to Giza, Cairo, Al Wahat road, 26th Jul Axis, the Cairo-Alex Desert road and the new regional ring road. 40 minutes from Lebanon Sq., 20 minutes from Hyper One and 10 minutes from Mall of Egypt.





Layout:



First Floor Plan

Entrance:



Running tracks



Public gardens:



Kid's area:





Club House:



Shopping area:



A-B

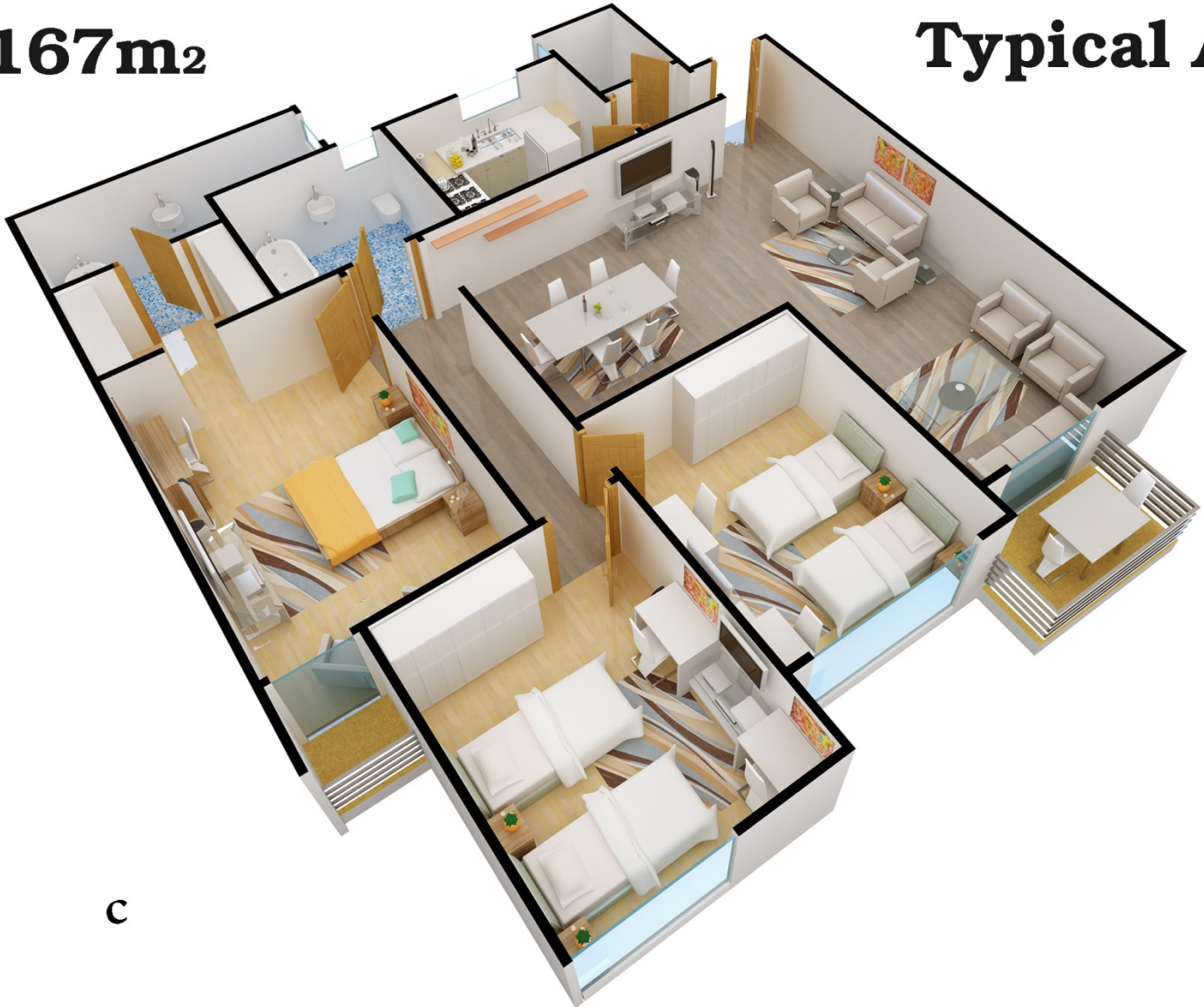
Typical



142M2

167m²

Typical A1



C

A-B

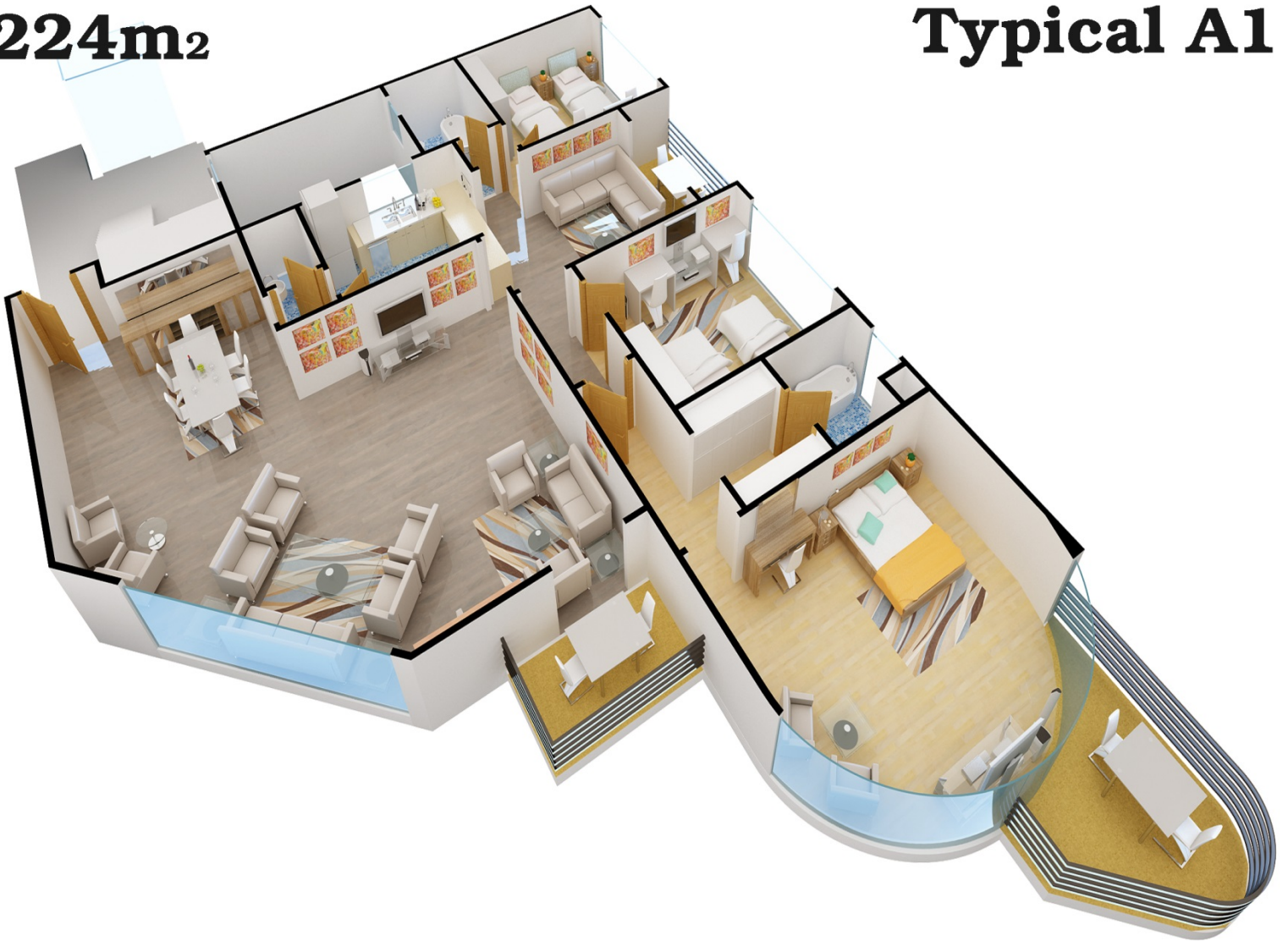
Typical



177M2

224m²

Typical A1





For more info...

Head Office

**1 Makram Ebeid St.
(+202) 2352 0572 / 303**

Mohandseen Branch

**30 Lebanon St.
(+202) 3344 3060 / 70**

New Cairo Branch

**Villa 32, Area B - South Academy.
(+202) 25373344 - (+202) 253733**

Hurghada Branch

**Hadaba Road, In front of Calypso.
(+202) 065 3442267**

www.edarseaview.com